



Drylac®

POWDER COATINGS

RAL colors

Interior and exterior applications



Drylac®
A BETTER FINISH. FOR A BETTER WORLD.

					
RAL 1000 49/15200	RAL 1019 49/13660 • 38/15019	RAL 2008 49/24340	RAL 3014 49/31080	RAL 4008 49/32280	RAL 5014 49/42320
					
RAL 1001 49/15190 • 38/15001	RAL 1020 49/22500 • 38/20020	RAL 2009 49/24360	RAL 3015 49/33670	RAL 4009 49/34740	RAL 5015 49/42330
					
RAL 1002 49/22590 • 38/20002	RAL 1021 49/22280	RAL 2010 49/24520	RAL 3016 49/31980	RAL 4010 49/40490	RAL 5017 49/40760 • 38/40017
					
RAL 1003 49/22580	RAL 1023 49/22490 • 38/20023	RAL 2011 49/24580	RAL 3017 49/31060	RAL 5000 49/42200	RAL 5018 49/41140 • 38/40020
					
RAL 1004 49/22570 • 38/20004	RAL 1024 49/22480	RAL 2012 49/24690	RAL 3018 49/31050	RAL 5001 49/42210	RAL 5019 49/42360 • 38/40019
					
RAL 1005 49/22560	RAL 1027 49/22470	RAL 3000 49/33120	RAL 3020 49/31040	RAL 5002 49/42220	RAL 5020 49/44270 • 38/40018
					
RAL 1006 49/22550	RAL 1028 49/22460	RAL 3001 49/31120	RAL 3022 49/33700	RAL 5003 49/42230	RAL 5021 49/41190 • 38/40021
					
RAL 1007 49/22540	RAL 1032 49/22450	RAL 3002 49/31110	RAL 3027 49/33660	RAL 5004 49/42240 • 38/40004	RAL 5022 49/42390
					
RAL 1011 49/15180	RAL 1033 49/22240	RAL 3003 49/31100	RAL 3031 49/34730	RAL 5005 49/43190	RAL 5023 49/44650
					
RAL 1012 49/22530	RAL 1034 49/23910	RAL 3004 49/33900	RAL 4001 49/43160	RAL 5007 49/42250 • 38/40007	RAL 5024 49/44660
					
RAL 1013 49/11280 • 38/10013	RAL 1037 49/20096	RAL 3005 49/31900	RAL 4002 49/31030	RAL 5008 49/42260 • 38/40008	RAL 6000 49/53160 • 38/50000
					
RAL 1014 49/15170 • 38/15014	RAL 2000 49/24570	RAL 3007 49/31910	RAL 4003 49/32270	RAL 5009 49/42270	RAL 6001 49/52900 • 38/50005
					
RAL 1015 49/15320 • 38/15015	RAL 2001 49/24560	RAL 3009 49/31920	RAL 4004 49/31020	RAL 5010 49/42280	RAL 6002 49/52890
					
RAL 1016 49/22520 • 38/20016	RAL 2002 49/24550	RAL 3011 49/31090	RAL 4005 49/42780	RAL 5011 49/43180 • 38/40011	RAL 6003 49/52880 • 38/50003
					
RAL 1017 49/22510	RAL 2003 49/24540	RAL 3012 49/31940 • 38/30012	RAL 4006 49/32090	RAL 5012 49/43170	RAL 6004 49/50980 • 38/50004
					
RAL 1018 49/21830	RAL 2004 49/24530	RAL 3013 49/31950	RAL 4007 49/32540	RAL 5013 49/42310 • 38/40013	RAL 6005 49/50670 • 38/50002



RAL 6006 49/52870 • 38/50006



RAL 6007 49/52860 • 38/50007



RAL 6008 49/53240 • 38/50008



RAL 6009 49/52840 • 38/50009



RAL 6010 49/52830 • 38/50031



RAL 6011 49/52820 • 38/50011



RAL 6012 49/51540 • 38/50012



RAL 6013 49/52810 • 38/50013



RAL 6014 49/52800



RAL 6015 49/52790



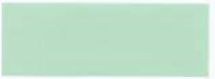
RAL 6016 49/51020 • 38/50016



RAL 6017 49/52780 • 38/50017



RAL 6018 49/52720 • 38/50018



RAL 6019 49/51000 • 38/50019



RAL 6020 49/52710 • 38/50020



RAL 6021 49/52700 • 38/50021



RAL 6022 49/52690 • 38/50022



RAL 6024 49/52680



RAL 6025 49/52670



RAL 6026 49/52660 • 38/50026



RAL 6027 49/50990 • 38/50027



RAL 6028 49/52650 • 38/50028



RAL 6029 49/52640 • 38/50029



RAL 6032 49/52630 • 38/50032



RAL 6033 49/55010 • 38/50033



RAL 6034 49/55020 • 38/50034



RAL 7000 49/72700 • 38/70000



RAL 7001 49/72710



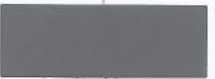
RAL 7002 49/72720 • 38/70007



RAL 7003 49/72600



RAL 7004 49/73300 • 38/70004



RAL 7005 49/72590 • 38/70005



RAL 7006 49/72580 • 38/70006



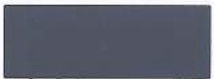
RAL 7008 49/72570



RAL 7009 49/72770 • 38/70009



RAL 7010 49/72560 • 38/70014



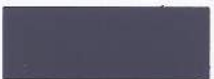
RAL 7011 49/72790 • 38/70011



RAL 7012 49/71180 • 38/70012



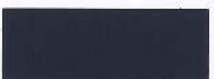
RAL 7013 49/72550 • 38/70013



RAL 7015 49/72820 • 38/70015



RAL 7016 49/72830 • 38/70016



RAL 7021 49/72540 • 38/70021



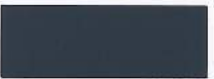
RAL 7022 49/72850 • 38/70022



RAL 7023 49/72530 • 38/70023



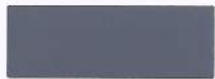
RAL 7024 49/72870 • 38/70024



RAL 7026 49/72880 • 38/70026



RAL 7030 49/72890 • 38/70027



RAL 7031 49/72520 • 38/70031



RAL 7032 49/72910 • 38/70001



RAL 7033 49/72510 • 38/70033



RAL 7034 49/72500



RAL 7035 49/73510 • 38/70035



RAL 7036 49/72950 • 38/70036



RAL 7037 49/72480 • 38/70037



RAL 7038 49/72470 • 38/70038



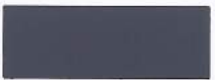
RAL 7039 49/71020 • 38/70039



RAL 7040 49/75470 • 38/70046



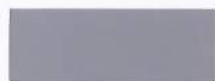
RAL 7042 49/73250 • 38/70042



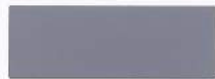
RAL 7043 49/72460 • 38/70043



RAL 7044 49/75480 • 38/70044



RAL 7045 49/77890 • 38/70045



RAL 7046 49/72010 • 38/70002



RAL 7047 49/72020 • 38/70047



RAL 8000 49/66170



RAL 8001 49/66160 • 38/60005



RAL 8002 49/66150 • 38/60002



RAL 8003 49/66140 • 38/60003



RAL 8004 49/66130 • 38/60004



RAL 8007 49/66120 • 38/60007



RAL 8008 49/66110 • 38/60008



RAL 8011 49/66100 • 38/60011



RAL 8012 49/66090 • 38/60012



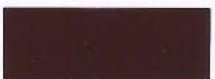
RAL 8014 49/65230 • 38/60010



RAL 8015 49/63040



RAL 8016 49/66080 • 38/60016



RAL 8017 49/65220 • 38/60017



RAL 8019 49/65490 • 38/60019



RAL 8022 49/63080 • 38/60022



RAL 8023 49/66070 • 38/60023



RAL 8024 49/66060 • 38/60024



RAL 8025 49/66050 • 38/60025



RAL 8028 49/66500 • 38/60028



RAL 9001 49/10016 • 38/10001



RAL 9002 49/70520 • 38/10002



RAL 9003 49/11400 • 38/10003



RAL 9004 49/81950 • 38/80004



RAL 9005 49/82830 • 38/80010



RAL 9010 49/11500 • 38/10004



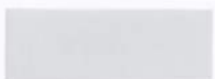
RAL 9011 49/80540



RAL 9016 49/11340 • 38/10010



RAL 9017 49/80550 • 38/80017



RAL 9018 49/72490 • 38/10018

TIGER Drylac[®]
Powder Coatings

THE AMERICAS**BRAZIL**

TIGER Drylac do Brasil Ltda.
13295-000 ITUPEVA SP
T 55-11-44-96-53-27
F 55-11-44-96-65-14
office.br@tiger-coatings.com

CANADA

TIGER Drylac Canada Inc.
Guelph, ON, N1G 4P5
T 1-800-243-8148
F 1-877-926-8148
customerservice.ca@tiger-coatings.com

Warehouse Alberta
Calgary, AB, Canada T2C 4Y7
T 1-800-243-8148
F 1-877-926-8148
customerservice.ca@tiger-coatings.com

Warehouse Manitoba
Winnipeg, MB, R3P 2M5
T 1-800-243-8148
F 1-877-926-8148
customerservice.ca@tiger-coatings.com

Warehouse British Columbia
Richmond, BC, V6W 1L8
T 1-800-243-8148
F 1-877-926-8148
customerservice.ca@tiger-coatings.com

MEXICO

TIGER Drylac MEXICO S.A. DE C.V.
Col. Santa Cruz Acatlan, Naucalpan
Edo. de Mexico C.P. 53150
T 52-55-53-63-12-14
F 52-55-53-63-17-39
mexico@tiger-coatings.com

TIGER Drylac MEXICO S.A. DE C.V.
Parque Industrial Tres Naciones -
Segunda etapa
San Luis Potosí, SLP, C.P. 78395
T 52-444-799-72-43
F 52-444-799-72-44
mexico-slp@tiger-coatings.com

U.S.A.

TIGER Drylac U.S.A., Inc.
St. Charles, IL 60174
T 1-800-243-8148
F 1-877-926-8148
customerservice.us@tiger-coatings.us

TIGER Drylac U.S.A., Inc.
Ontario, CA 91761
T 1-800-243-8148
F 1-877-926-8148
customerservice.us@tiger-coatings.us

Warehouse Texas
Dallas, TX 75233
T 1-800-243-8148
F 1-877-926-8148
customerservice.us@tiger-coatings.us

Warehouse Georgia
Jonesboro, GA 30236
T 1-800-243-8148
F 1-877-926-8148
customerservice.us@tiger-coatings.us

Warehouse Pennsylvania
Reading, PA 19605
T 1-800-243-8148
F 1-877-926-8148
customerservice.us@tiger-coatings.us

EUROPE**AUSTRIA**

TIGER Coatings GmbH & Co. KG
A-4600 Wels
T 43-7242-400-0
F 43-7242-650-08
office@tiger-coatings.com
www.tiger-coatings.com

BELARUS

ODO «Tehncolor» Minsk
220089 Minsk
T/F 375-17-204-12-77
F 375-17-204-68-81
tehnicolor@tut.by

BENELUX

TIGER Coatings Belgium bvba
BE-3640 Kinrooi
T 32-89-70-00-16
F 32-89-56-78-58
office.be@tiger-coatings.com
office.nl@tiger-coatings.com

BOSNIA & HERZEGOVINA

KLIO d.o.o.
BiH-75300 Lukavac/Tuzla
T 387-35-541-300
F 387-35-541-303
klio@klio.ba

BULGARIA

Deyacolor LTD
BG-1113 Sofia 13 post box no. 265
T/F 359-2-978-58-61
P 359-2-411-49-83
office@deyacolor.com

CROATIA

KLIO d.o.o.
CRO-10360 Popovec/Sesvete
T 385-1-200-9041
F 385-1-200-9043
klio@klio.hr

CZECH REPUBLIC

TIGERLAK, s.r.o.
CZ-620 00 Brno
T 420-545-429-110
F 420-545-229-209
office.cz@tiger-coatings.com

FRANCE

TIGER S.A.R.L.
F-69480 Anse
T 33-474-67-13-70
F 33-474-67-10-42
office.fr@tiger-coatings.com

GERMANY

KLOZ Kunststofftechnik GmbH
D-70736 Fellbach-Oeffingen
T 49-711-95-19-80-32
F 49-711-518-07-50
info@kkt.info

KLOZ Wickede
D-58739 Wickede-Ruhr
T 49-2377-36-25
F 49-2377-26-22

Jochen Hänel Handelsvertretung
D-65239 Hochheim a. Main
T 49-6146-83-58-81
F 49-6146-83-58-84
jochen.haenel@tiger-coatings.com

Boris Herrmann Handelsvertretung
D-44309 Dortmund
T 49-231-25-70-12
F 49-231-25-70-15
boris.herrmann@tiger-coatings.com

Thomas Leitzke Handelsvertretung
D-41470 Neuss
T 49-2137-10-97-367
F 49-2137-10-97-368
thomas.leitzke@tiger-coatings.com

GREAT BRITAIN

TIGER COATINGS UK LTD
Solihull, West Midlands, B93 9EG
T 44-1564-778-866
F 44-1564-778-903
office.gb@tiger-coatings.com

HUNGARY

TIGERLAKK Kft.
H-1183 Budapest
T 36-61-293-90-20
F 36-61-297-45-49
office.hu@tiger-coatings.com

ITALY

TIGER Drylac Italia s.r.l.
I-24121 Bergamo
T 39-35-413-35-80
F 39-35-27-03-87
office.it@tiger-coatings.com

LITHUANIA, LATVIA

UAB "LAKMALIT"
LT-44299 Kaunas
T 370-7-32-37-41-32-34-95
F 370-7-32-40-87
tiger@lakmalit.lt

POLAND

Tensor Consulting
PL-04512 Warsaw
T 48-22-815-42-79
F 48-22-812-09-50
office@tensor.com.pl

RUSSIA

OOO Technokolor-M
107370 Moscow
T 007-495-787-43-73
F 007-499-966-75-08
sale@tehnokolor.ru

SERBIA & MONTENEGRO

KLIO NS d.o.o.
YU-21000 Novi Sad
T 381-21-478-01-08
F 381-21-641-00-40
klio_ns@yahoo.com

SLOVAKIA

TIGERLAK Slovakia spol.s r.o.
SK-902 01 Pezinok
T 421-33-640-00-71
F 421-33-640-00-72
office.sk@tiger-coatings.com

SLOVENIA

T-Lotus d.o.o.
SLO-9240 Ljutomer
T 386-2-583-18-79
F 386-2-583-18-80
kontakt@t-lotus.si

SPAIN

TIGER Coatings Spain S.L.
ES-12540 VILA-REAL (Castellón)
T 34-964-050-309
F 34-964-050-309
office.es@tiger-coatings.com

SWITZERLAND

FEYCO AG
CH-9430 St. Margrethen SG
T 41-71-747-84-11
F 41-71-747-85-10
info@feyco.ch

UKRAINE

Interfarb - Ukraina GmbH
UA-79012 Lviv
T/F 380-32-240-23-11
T 380-32-297-10-76
interfarb@utel.net.ua

AFRICA**EGYPT**

TIGER Coatings Egypt (LTD)
Cairo, 11828, Egypt
T 20-2-46-65-14-55
F 20-2-46-65-04-31
office.eg@tiger-coatings.com

SOUTH AFRICA

FERRO Industrial Products (PTY) LTD
Brakpan, South Africa 1540
T 27-11-746-4000
F 27-11-746-4020
williams@ferrosa.co.za

ASIA**CHINA**

TIGER Drylac (Taicang) Co. Ltd.
Taicang, Jiangsu 215400
T 86-512-53-73-79-99
F 86-512-53-73-77-08
office.cn@tiger-coatings.com

TIGER Drylac (Taicang) Co. Ltd.
Chengdu Branch, Xin Jin, Si Chuan Province
T 86-512-53-73-79-99
F 86-512-53-73-77-08
office.cn@tiger-coatings.com

TIGER Drylac Beijing Warehouse

Shibali dian Chaoyang, Beijing
T 86-10-87-30-48-66
F 86-10-87-30-51-47

TIGER Technology Centre - South China

Zhongshan, Guangdong
T 86-760-89-93-70-56
F 86-760-89-93-70-57

JAPAN

TIGER Drylac JAPAN K.K.
Sagamihara, 252-1135, JAPAN
T 81-42-760-60-56
F 81-42-760-60-57
office.jp@tiger-coatings.com

TIGER Drylac JAPAN K.K. Osaka office

Nishinakajima Osaka, 532-0011
T 81-6-63-01-12-25

MALAYSIA

TIGER Drylac MALAYSIA Sdn. Bhd.
50250, Kuala Lumpur
T 60-3-20-39-43-15
F 60-3-20-31-83-59
office.my@tiger-coatings.com

TAIWAN

Vigorousport Int. Co., Ltd.
Taichung, TAIWAN
T 886-4-23-82-21-23
F 886-4-23-82-21-11
office.tw@tiger-coatings.com

THAILAND

Grand Siam Commercial Co., Ltd.
Bangkok 10320
T 66-2-691-62-74
F 66-2-691-22-25
apichart@samart.co.th

VIETNAM

TIGER Drylac Vietnam Co., Ltd.
Binh Duong Province
T 84-650-375-83-70
F 84-650-375-83-71
office.vn@tiger-coatings.com



Member of

Powder
Coating
Institute



A GREENER FINISH
FOR A BETTER WORLD.